



2025 IBSA JUDO EUROPEAN CHAMPIONSHIPS TBILISI
19 – 21 SEPTEMBER 2025



2025 IBSA JUDO European Championships TBILISI

**TBILISI,
GEORGIA, 19-21
SEPTEMBER 2025**

VENUE: «Tbilisi Olympic Palace», 15a University, Tbilisi, Georgia

This event provides points for the new IBSA Judo WRL

Final number of mats will be confirmed after entry by names deadline



**2025 IBSA JUDO EUROPEAN CHAMPIONSHIPS TBILISI
19 – 21 SEPTEMBER 2025**



Dear IBSA JUDO FAMILY,

Tbilisi, Georgia has become a key destination in the IBSA Judo calendar. Following the great success of the 2025 IBSA Judo World Cup held in March, the city is now proud to host the **2025 IBSA Judo European Championships – Individuals and Teams**.

This event will be one of the most important Paralympic judo competitions of the year. We are looking forward to welcoming you once again to Georgia.

Sincerely yours,

Rati Ionatamishvili

**PRESIDENT OF THE GEORGIAN
PARALYMPIC COMMITTEE**



2025 IBSA JUDO EUROPEAN CHAMPIONSHIPS TBILISI
19 – 21 SEPTEMBER 2025



IMPORTANT INFORMATION

1. DEADLINES AND KEY DATES

Action	Date
Deadline for eye classification request	First: 10 July 2025 Second: 5 August 2025
Deadline for uploading MDFs	First: 10 July 2025 Second: 5 August 2025
Deadline for entry by number on ISAS	15 July 2025
Deadline for entry by name on ISAS	5 August 2025
Deadline for visa request	15 July 2025
Deadline for accommodation form	15 July 2025
Deadline for flight information	15 July 2025
Deadline for accreditation form	1 August 2025
Deadline for payment	1 August 2025
Arrival (check-in after 3 Pm)	15 September 2025
Accreditation	16 & 17 September 2025
Classification*	16-17 September
Training	15-19 September
Draw online	18 September 2025
Competition	19-21 September
Competition's departure (check out before 12:00 PM)	22 September 2025

***All athletes who need classification MUST arrive on the 15th of September, 2025**

In order to run the competition properly, all competitors must arrive two days before the day of the competition (also for those who do not need to participate in the eye examination).

2. PARTICIPACION RULES

All judokas must possess the IBSA ISAS code. All IBSA athletes must be registered on the IBSA Sport Administration System (ISAS). Entries should be made by the ISAS Online Registration System 60 days before the event:

<https://isas.ibsasport.org/isas/entries/index> and through the forms for the organizing committee. Registration made only in ISAS will not be considered and registration made with only with LOC will not be considered. Both must be completed and submitted within the deadline stipulated by the LOC.



**2025 IBSA JUDO EUROPEAN CHAMPIONSHIPS TBILISI
19 – 21 SEPTEMBER 2025**



All IBSA member federations, officials, coaches, and athletes participating in the event described in these outlines must respect and accept the authority of the IBSA Officials, the IBSA Statutes & rules, the IJF Sports and Organization Rules (SOR), the IBSA Refereeing Rules and IBSA IJR. Individuals deemed to have acted against the above-mentioned rules, its principles, or purposes shall be subject to suspension or expulsion from the event and/ or cancellation of their accreditation cards.

Any delegate is eligible to inscribe in the competition provided he/she is:

- Holder of IBSA Athletes License for the current year (athletes).
- From a Federation that has paid IBSA Membership fee for the current year.
- Having valid eye classification.
- Not under a disciplinary suspension.
- Not under suspension for anti-doping rule violation.
- Not under medical suspension.
- Healthy and fit for competition.
- Do not carry any communicable diseases that may risk other delegates' health.
- Participating athletes must be born in 2010 (15 years in the calendar year) or before.
- Sufficient technical knowledge and understand fully the IBSA and IJF sport and refereeing rules.
- Participants must also satisfy all regulations in the IJF COVID-19 Protocol and COVID-19 local protocol.

Each IBSA Member can inscribe a maximum of two (2) athletes per category for this event.

One athlete can fight only in one eye class and weight category in an event.

3.EYE CLASSIFICATION PROCEDURE

Visual Classification

Classification days are September 16th and 17th 2025.

Please read all below and prepare your team for Classification according to the rules. Players must become familiar with rules and procedures of IBSA medical classification: <http://www.ibsasport.org/documents/files/68-1-IBSA-Classification-Rules-and-Procedures.pdf>

Submission Deadlines

1.The First Deadline for Submission of a Request for Classification Form (by email to classification@ibasport.org) and for uploading athlete MDFs and supporting



**2025 IBSA JUDO EUROPEAN CHAMPIONSHIPS TBILISI
19 – 21 SEPTEMBER 2025**



medical tests in ISAS is July 10th, 2025. Submissions received by this deadline will be given first priority for allocation of a classification assessment slot at the competition. Athletes will be assigned a classification appointment only after the MDF and supporting medical documents have been approved by the classifiers as establishing an UHC (Underlying Health Condition)

2. Second Deadline: Submissions received after the first deadline (and by August 5th 2025) will be allocated a classification slot if available, on a first come first served basis. Athletes will be assigned a classification appointment (if available) only after the MDF and supporting medical documents have been approved by the classifiers as establishing an UHC.

Submissions received after August 5th 2025, will not be reviewed by classifiers or considered for this competition.

Medical Diagnostics Form (MDF) and other required medical diagnostics documentation must not be older than 1 year. Final second deadline for MDF is August 5th, 2025.

The Classification Process is as follows

The first step in the classification process is to establish that the athlete has an Underlying Health Condition (UHC) that leads to an eligible vision impairment. This is done by classifiers who review the athlete's Medical Documentation Form (MDF) and supporting medical documents. This review takes place before the athlete is assigned a classification evaluation appointment. If the information is not complete, or there is not sufficient evidence of an UHC leading to an eligible vision impairment, the athlete will not be scheduled for a classification appointment.

1. Once a UHC is established, the athlete can be scheduled for a classification evaluation appointment.
2. At the classification evaluation appointment, the classification panel will
 - a. confirm (or not) the UHC,
 - b. if the UHC is confirmed, the classification panel will proceed with a vision assessment to determine
 - i. if the athlete meets the minimum impairment criteria,
 - ii. assign a sport class and sport class status to the athlete

Only athletes competing in this event can be classified.



**2025 IBSA JUDO EUROPEAN CHAMPIONSHIPS TBILISI
19 – 21 SEPTEMBER 2025**



4. BEFORE TRAVELLING

- Passports must be valid for at least 6 months from the date of arrival.
- Check host country entry requirements and airline requirements (if applicable).
- Check if you need a visa, and if yes, request it from the LOC.
- Each IBSA member Federation is responsible for ensuring adequate insurance in the case of injury, illness, quarantine, repatriation, etc. of any member from their delegation during the event.
- All accommodation fees must be paid in advance of the event by bank transfer.
- **In order to run the competition properly, all competitors must arrive two days before the day of the competition**

5. LOCAL ORGANISING COMMITTEE (LOC)

Name	Georgia Paralympic Committee
Address	Beliashvili Str. #5, Tbilisi, Georgia
Email	georgianparalympic@gmail.com
Website	www.paralympic.ge https://www.facebook.com/NPCGEO https://x.com/georgianparaly1 https://instagram.com/georgian_paralympic



**2025 IBSA JUDO EUROPEAN CHAMPIONSHIPS TBILISI
19 – 21 SEPTEMBER 2025**



6. LOCAL EVENT CONTACT

TINATIN JAVAKHISHVILI

Email address: tikuna_javakhishvili@yahoo.com

tbilisijudo@gmail.com

Telephone number: +995 595 600 622 (WHATS APP,
VIBER AVAILABLE)



Event Director	LASHA MAISURADZE	Lasha85.maisuradze@gmail.com	+995 595 600 622 (WHATS APP, TELEGRAM AVAILABLE)
Accommodation	TINATIN JAVAKHISHVILI	tikuna_javakhishvili@yahoo.com	
General Enquiries			
Training			
Visa			
Transportation	TATIA DARSVELIDZE	darsavelidze@cu.edu.ge	
Finances	SOFIO GIORGIDZE	sofiigiorgidze@gmail.com	



**2025 IBSA JUDO EUROPEAN CHAMPIONSHIPS TBILISI
19 – 21 SEPTEMBER 2025**



7.COMPETITION VENUE

Name	Tbilisi Olympic Palace
Address	15a University Str, Tbilisi, Georgia.
Number of mats	2 or 3. It will be confirmed after entry by number.



8.INDIVIDUAL COMPETITION CATEGORIES

This competition will be conducted in accordance with the 8 official competition categories approved by the IPC for the 2024-2028 Paralympic cycle for Para Judo:

WOMEN	MEN
J1 -52 kg	J1 -70 kg
J2 -52 kg	J2 -70 kg
J1 -60 kg	J1 -81 kg
J2 -60 kg	J2 -81 kg
J1 -70 kg	J1 -95 kg
J2 -70 kg	J2 -95 kg
J1 +70 kg	J1 + 95 kg
J2 +70 kg	J2 +95 kg



2025 IBSA JUDO EUROPEAN CHAMPIONSHIPS TBILISI
19 – 21 SEPTEMBER 2025



9. TEAM'S EVENT INFORMATION

Delegations interested in participating in the team competition may register their teams during accreditation. The deadline for registration of teams will be at the break of the first day of competition (19 September). The draw for the team's event will take place and streamed during the break on the second day of competition (20 September).

The competition will be conducted in accordance with the latest IJF SOR, IJF Refereeing Rules and IJF Anti- Doping Rules. The system of competition for IBSA Judo Teams events will be:

- Elimination system with double repechage (6 or more teams).
- Round Robin (5 or less teams).

IBSA Judo Team's events categories:

WOMEN'S EVENT

	Athletes that didn't compete in individual event	Athletes that competed in individual event (5% tolerance)
J1 -52 kg	Up to and including 52 kg	Up to and including 54,6 kg
J2 -60 kg	Over 52 kg and up to and including 60 kg	Over 52 kg and up to and including 63 kg
J1 +60 Kg	Over 60 kg	Over 60 kg
J2 -52 KG	Up to and including 52 kg	Up to and including 54,6 kg
J1 -60 kg	Over 52 kg and up to and including 60 kg	Over 52 kg and up to and including 63 kg
J2 +60 Kg	Over 60 kg	Over 60 kg

MEN'S EVENT

	Athletes that didn't compete in individual event	Athletes that competed in individual event (5% tolerance)
J1 -70 kg	Up to and including 70 kg	Up to and including 73,5 kg
J2 -81 kg	Over 70 kg and up to and including 81 kg	Over 70 kg and up to and including 85 kg
J1 +81 Kg	Over 81 kg	Over 81 kg
J2 -70 kg	Up to and including 70 kg	Up to and including 73,5 kg
J1 -81 kg	Over 70 kg and up to and including 81 kg	Over 70 kg and up to and including 85 kg
J2 +81 Kg	Over 81 kg	Over 81 kg



2025 IBSA JUDO EUROPEAN CHAMPIONSHIPS TBILISI
19 – 21 SEPTEMBER 2025



Minimum number of athletes by team: 4 at 4 different categories
Maximum number of athletes by team: 12 (2 for each category)

Two (2) coaches and one (1) doctor per team will be allowed to enter the field of play. Athletes should enter the field of play in the order that they will compete in.

Before each mat the team leader must select the athletes for each contest. He/she can select one of the athletes who can compete in each category (see the tables above). If the team has the possibility to put an inscribed athlete in a category, he/she must do so. An athlete cannot be rested for one match and return for the next unless he/she has been replaced by other inscribed athlete.

Each athlete is entitled to compete in their own weight category or in the next higher weigh category. J1 Athletes are allowed to compete at J2 category*

*See below tables

Men's event	They can compete also in...		
J1 -70 kg	J2 -70 kg	J1 -81 kg	J2 -81 kg
J2 -81 kg	J2 +81 kg		
J1 +81 kg	J2 +81 kg		
J2 -70 kg	J2 -81 kg		
J1 -81 kg	J2 -81 kg	J1 +81 kg	J2 +81 kg
J2 +81 kg			

Women's event	They can compete also in...		
J1 -52 kg	J2 -52 kg	J1 -60 kg	J2 -60 kg
J2 -60 kg	J2 +60 kg		
J1 +60 kg	J2 +60 kg		
J2 -52 kg	J2 -60 kg		
J1 -60 kg	J2 -60 kg	J1 +60 kg	J2 +60 kg
J2 +60 kg			



2025 IBSA JUDO EUROPEAN CHAMPIONSHIPS TBILISI
19 – 21 SEPTEMBER 2025



10. DRAFT PROGRAMME

DATE	TIME	ACTIVITY	PLACE
15.09.2025	All Day	Arrival Delegations	TBILISI INT. AIRPORT
	09:00-20:00	Training	HOTELS & PREFERENCE HUALING
16.09.2025	09:00-20:00	Training	HOTELS & PREFERENCE HUALING
	09:00-18:00	Eye Classifications	
	09:00-18:00	Accreditation	
17.09.2025	09:00-18:00	Training	HOTELS & PREFERENCE HUALING
	09:00-18:00	Accreditation	
	09:00-18:00	Eye Classifications	
18.09.2025	09:00-20:00	Training	HOTELS & PREFERENCE HUALING
	11:00-12:00	Coaches meeting	
	14:00-16:00	Pre-judogi control	
	17:00-18:00	Unofficial Weigh-in	
	18:00-18:30	Official Weigh-in	
		WOMEN MEN	
		J1 -52 kg J1 -70 kg	
		J2 -52 kg J2 -70 kg	
		J2 -60 kg J1 -81 kg	
		J2 -81 kg	
	20:00	Draw	ONLINE
COMPETITION DAY 1			
19.09.2025	9:00-9:15*	Random weigh-in	TBILISI OLYMPIC PALACE
		WOMEN MEN	
		J1 -52 kg J1 -70 kg	
		J2 -52 kg J2 -70 kg	
		J2 -60 kg J1 -81 kg	
		J2 -81 kg	
	10:00*	Preliminaries	
	13:00-14:00	Unofficial weigh-in	
		Official weigh-in	



2025 IBSA JUDO EUROPEAN CHAMPIONSHIPS TBILISI
19 – 21 SEPTEMBER 2025



19.09.2025	14:00-14:30	WOMEN J1 -60 kg J1-70 kg J2-70 kg J1 +70 kg J2 +70 kg		MEN J1 -95 kg J2 -95 kg J1 +95 kg J2 +95 kg		TBILISI OLYMPIC PALACE
	15:00	Final block and awarding ceremonies				
COMPETITION DAY 2						
20.09.2025	9:00 - 9:15h*	Random weigh-in				TBILISI OLYMPIC PALACE
		WOMEN J1 -60 kg J1-70 kg J2-70 kg		MEN J1 -95 kg J2 -95 kg		
	10:00	Preliminaries				
		WOMEN J1 -60 kg J1-70 kg J2-70 kg J1 +70 kg J2 +70 kg		MEN J1 -95 kg J2 -95 kg J1 +95 kg J2 +95 kg		
	13:00-14:00	Unofficial Weigh-in				
14:00-14:30	Official weigh-in**					
	15:00	Final block and awarding ceremonies				



2025 IBSA JUDO EUROPEAN CHAMPIONSHIPS TBILISI
19 – 21 SEPTEMBER 2025



COMPETITION DAY 3: TEAMS EVENT

21.09.2025	10:00	Preliminaries	TBILISI OLYMPIC PALACE
	After	Final block and awarding ceremonies	
22.09.2025	ALL DAY	DEPARTURES	

IMPORTANT REMARKS

- The starting time of the competition may change depending on the final number of registered athletes. Random weigh-in will be modified accordingly*
- The official weigh-in for the second and third day of competition will take place in the sport hall at 14:00 h.
- The women's J1 -60 kg category will be contested on the second day of competition.
- **Team's event weigh-in**:**
 - **Athletes who competed on first day will be required to weigh-in at the team's event weigh-in, but will have a margin of 5% of their body weight.**
 - **Athletes participating in the second day of competition will not need to be weighed at the team's event weigh-in**
 - **Athletes who did not participate in the individual competition will not have a margin and must adhere to the limits of their weight category.**

11. ENTRY TO THE HOST COUNTRY

For those participants who need a visa the LOC will assist where possible but having the correct visa is the responsibility of each participant. Please note that visa approvals or rejections are done by the Government authorities and the LOC has no control over this and cannot be held responsible for any rejections.

Complete the form	Visa request form for IBSA JUDO WORLD CUP ASTANA 2025	
Deadline	15th of September, 2025	
Visa contact	Tinatin	tbilisijudo@gmail.com



**2025 IBSA JUDO EUROPEAN CHAMPIONSHIPS TBILISI
19 – 21 SEPTEMBER 2025**



12. ACCOMMODATION

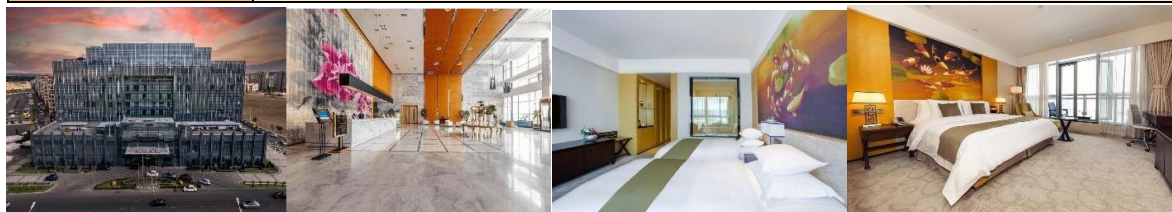
All delegations, who inscribe for an IBSA JUDO event, must reserve their accommodation in the official hotel published in this event outlines. The reservation must be made with the LOC (not directly with the hotel). Any damage to hotel property resulting from the stay of a National Delegation will be charged to the National Federation and must be paid in full.

Delegations are kindly requested not to dry clothing (including judogi) or have training sessions in the corridors of the official hotels.

Complete the form	IBSA JUDO WORLD CUP TBILISI 2025 ENTRY FORM ENTRY BY NAME, INVOICE, ACCOMMODATION, PHOTOS AND FLIGHTS INFORMATION		
Deadline final reservation and full payment	Deadline for accommodation and payment– 1 st August, 2025		
Accommodation contact	Tinatin	tbilisijudo@gmail.com	+995 595 600 622

Note: The LOC will do their best to provide your first choice of accommodation but, as rooms might be limited, this cannot be guaranteed. After the accommodation deadline, the organizer cannot promise rooms in the hotels detailed in these outlines and another official hotel may be added.

Hotel	Hotels & Preference Hualing Tbilisi
Address	Tbilisi Sea New City, Tbilisi.



Check-in time	14:00
Check-out time	12:00
From airport	10 km
To venue	16 km

Prices: all prices are per person, per night in **EURO**



2025 IBSA JUDO EUROPEAN CHAMPIONSHIPS TBILISI
19 – 21 SEPTEMBER 2025



ENTRY FEE AND PAYMENTS	
Single room – per person, per night	230 €
Twin room – per person, per night	200 €
IBSA Capitation Fee Per Athlete	100 €
IBSA Capitation Fee Per team member	50 €
<i>*Accommodation fees includes full board meals and transportation</i>	
<i>*Registration fees includes antidoping fees</i>	

PAYMENT

Full payments must be paid via bank by the 1st August 2025

All bank fees and bank transfer costs are paid by the participating National Federation. All bank details will be on the invoice.

Cash payments will be accepted only with a guarantee letter.

If payment is being made by bank transfer the bank information must be inserted correctly and completely on the transfer document and any procedures related to the amendment of the bank transfer must be done before arrival.

Delegations must ensure that all bank charges are paid at their end so that the organizers receive the correct amount of funds without any deductions. The person attending accreditation must bring proof that the bank transfer. Any damage to hotel property resulting from the stay of a national delegation will be charged to the national federation and must be paid in full.

Delegations are kindly requested not to dry clothing (including judogi) or have training sessions in the corridors of the official hotels.

Note: The LOC will do their best to provide your first choice of accommodation but, as rooms might be limited, this cannot be guaranteed.

After the accommodation deadline, the organizer cannot promise rooms in the hotels detailed in these outlines and another official hotel may be added. If rooms need to be cancelled, please inform the organizer immediately.

Cancellation of rooms cannot be made at check-in. **Illness, injuries or visa problems are not valid reasons for the cancellation of rooms.** If rooms are cancelled the organizer has the right to charge the participating delegation as follows:

- Up to 30 days before the arrival - full refund.
- From 30-15 days before the arrival - 50% refund.
- From 14 days – expected arrival - no refund, 100% of the hotel costs must be paid.

Reservations of extra rooms at the check-in may be surcharged with an additional 100%.



2025 IBSA JUDO EUROPEAN CHAMPIONSHIPS TBILISI
19 – 21 SEPTEMBER 2025



13. TRAINING DURING THE EVENT

Training during the event is located in the official hotel. Planning and scheduling of training sessions will be organised taking into consideration requests made by delegations daily on a first request made first served basis. To book training contact the LOC.

Training venue	Hotels & Preference Hualing Tbilisi
Address	Tbilisi Sea New City, Tbilisi.
Training dates	15-19 September 2025
Training times	9:00-20:00

14. TRANSPORTATION

The local organizer will provide official transportation for competing delegations during the competition. This transportation service includes airport transfers.

To guarantee airport transfers, arrival and departure details for each participant should be included in ENTRY FORM.

Transportation from Airport to Hotel and Hotel to Airport, Hotel to Venue and Venue to Hotel will be made free of charge.

It is possible to organize private minivans/bus for countries should they wish to travel separately; this will be at an extra cost to the country requesting it – please contact the organizers to enquire.

From Hotel to Venue: approximately 30 minutes.

Bus schedule will be provided to each delegation before technical meeting. Travel forms should be sent before the deadline by 10th of February, 2025.

15. DOPING CONTROL

1.1. ANTI- DOPING CONTROL

In all official IBSA tournaments, it is mandatory to conduct anti-doping controls in accordance with IBSA regulations. Prior to undergoing doping control, athletes may participate in the awards ceremony, fulfill press commitments, or receive medical treatment if necessary. Selected competitors will be continuously accompanied by an official chaperone (appointed by the organizing committee) from the time of notification until arrival at the Doping Control Station and end



**2025 IBSA JUDO EUROPEAN CHAMPIONSHIPS TBILISI
19 – 21 SEPTEMBER 2025**



the test. An individual of the athlete's choice, such as the team doctor, coach, trainer, or delegation head, may accompany them.

IBSA reserves the right to test any athlete at any time beyond the aforementioned selection during an event, at its discretion, IBSA may allow Testing Authorities to conduct both in-competition and out-of-competition tests. Always remember that all athletes including minor athletes participating in any official IBSA event are in compliance with anti-doping rules and are aware that they may undergo doping control during the event, accepting and cooperating.

<http://www.ibsasport.org/antidoping/>

1.2 ANTI- DOPING EDUCATION

As previously communicated to all National Federations, it is **MANDATORY** for all athletes to complete an anti-doping education session before the competition. Please submit the proof of completion at least 3 months in advance, as outlined in the notification sent. This requirement is crucial to ensure that all athletes are well-informed about the anti-doping regulations and procedures, promoting a fair and clean competition environment.

Should you have any questions or require further clarification, please do not hesitate to contact us at anti-doping@ibasport.org. Our team is ready to assist you with any inquiries or support you may need regarding the anti-doping education requirements or any other related matters.



2025 IBSA JUDO EUROPEAN CHAMPIONSHIPS TBILISI
19 – 21 SEPTEMBER 2025



16. POST EVENT SURVEY

After each event a questionnaire will be sent to your constructive comments and feedback and how to improve the next edition of the event.

17. GENERAL INFORMATION

FUNDAMENTAL PRINCIPLES

The competition will be conducted in accordance with the latest IBSA Judo Rules, IJF & IBSA Judo Refereeing Rules, IJF Code of Ethics, IBSA Judo Classification Rules and current IBSA Anti-Doping Rules.

All IBSA member federations, officials, coaches, and athletes participating in the event described in these outlines must respect and accept the authority of the IBSA Officials, the IBSA Statutes & rules, the IJF Sports and Organization Rules (SOR), the IBSA Refereeing Rules and IBSA Judo Rules. Individuals deemed to have acted against the above-mentioned rules, its principles, or purposes shall be subject to suspension or expulsion from the event and/or cancellation of their accreditation cards.

INSURANCE

Each National Federation is directly responsible for its athletes (the control of non- pregnancy and the control of gender). It must assume all responsibility for accident and health insurance as well as civil liabilities during all IBSA Judo Events for everyone under their charge. National Federations are responsible to provide insurance guarantees to their delegates during any IBSA Judo Event. The LOC of the event and IBSA will not be responsible in the absence of insurance. The LOC of the event and IBSA have no liability for any claims of injury, illness or death arising from the travelling to and the participation in this event.

CONSENT FOR USE OF DATA/PHOTOGRAPHY/VIDEOS/FILMING

Delegates inscribed by their National Federations for IBSA Judo Events consent to the IBSA and its media partners to use content of them, including data, live results, photographs and/or video recordings (hereafter referred to as Media). This media may be obtained from National Federations and IBSA.



**2025 IBSA JUDO EUROPEAN CHAMPIONSHIPS TBILISI
19 – 21 SEPTEMBER 2025**



It will also be acquired by IBSA and its media partners from in and around all IBSA Judo Event venues. Media could be used in print and digital media formats including print publications, websites, e-marketing, posters banners, advertising, film, broadcast, social media, education purposes and other purposes. The National Federation must ensure that they have the permission of each delegate or in the case of a minor the permission of the parent/guardian. If a delegate does not give consent for use of data, photography, videos and filming then the National Federation must inform IBSA by writing to media@ibsasport.org

ACCOMMODATION

All delegations, who inscribe for an IBSA Judo Event, must reserve their accommodation in one of the official hotels published in the event outlines. The reservation must be made with the local organising committee (not directly with the hotel).

The minimum reservation for a delegation is two (2) nights multiplied by the total number of people inscribed. The referee nominated by the IJF and IBSA is not included in this calculation. Example: 4 people inscribed (no referee) = 4×2 nights = 8 nights or more must be reserved 17 people inscribed (including 1 referee) = $(17-1) \times 2 = 32$ nights or more must be reserved. This rule does not apply to the host National Federation delegates.

Any damage to hotel property resulting from the stay of a national delegation will be charged to the national federation and must be paid in full.

Delegations are kindly requested not to dry clothing (including judogi) or have training sessions in the corridors of the official hotels.

COMPETITION RULES

System of competition:

- 6 or more athletes: Eliminatories+ **Double repechage**
- 5 or less athletes: Round robin

Duration of contests: four (4) minutes (real time).

Each IBSA Member can inscribe a maximum of two (2) athletes per category for this event.



**2025 IBSA JUDO EUROPEAN CHAMPIONSHIPS TBILISI
19 – 21 SEPTEMBER 2025**



INSCRIPTION OF DELEGATES

Only entries of member National Federations/Unions/Committees will be accepted.

Athletes can be entered in ONLY one category per IBSA Judo Event. In the event of a change in the athlete's visual classification but the athlete is still eligible to participate in the championships, the IT expert of the competition shall be responsible for making the change in the athlete's entry before the draw is made.

Each person can only be inscribed with one function (i.e. athlete, coach, referee, team official etc.) per event.

The National Federation is responsible for obtaining legal approval and permission for minor athletes to compete in competitions. When travelling with minors the team official/coach must have all the necessary documents in place that authorises them to act on behalf of the parents/guardians "in loco parentis". This also applies to doping control. The National Federation must ensure that minor athletes have their parental/guardian permission to undergo testing.

Each National Federation may enter:

- Up to 16 entries for women with maximum 2 athletes per category.
- Up to 16 entries for men with maximum 2 athletes per category.

ACCREDITATION

The purpose of accreditation is to identify people and their roles at events and allow them necessary access to perform their roles. At least one team delegate must attend on time to confirm the entries of all athletes and officials with a signature on the delegation confirmation list. A delayed appearance or no-show may result in the exclusion of all participants from the draw and the event.

For each official team member from a national delegation (athletes, coach, team official, doctor etc.) an accreditation card is issued by IBSA Judo during the official registration. A delegate should never wear another delegate's accreditation card.

The accreditation card remains the property of the IBSA Judo and can be withdrawn, with immediate effect, at the IBSA's sole discretion. The accreditation card is valid for the duration of the competition and is the personal identity document of the delegate for all security and access controls. This card contains: last (family) name, first (given) name, country,



2025 IBSA JUDO EUROPEAN CHAMPIONSHIPS TBILISI
19 – 21 SEPTEMBER 2025



a picture and for athletes their competition category.

DRAW AND SEEDING

Up to a maximum of the top four athletes among the entered athletes in each category will be seeded based on their IBSA Judo WRL position. The draw will be held online

OFFICIAL JUDOGI

Athletes must compete wearing an IJF approved judogi (white and blue) from one of the following official suppliers can be found here:

www.ijf.org/supplier-list

For further information on the judogi rules please refer to the IJF SOR (www.ijf.org/ijf/documents/21).

OFFICIAL IJF BACKNUMBER

Each competitor is obliged to have sewn on the back of his judogi a backnumber bearing their last (family) name and National Paralympic Committee abbreviation. The last (family) name (and any part of their given (first) name) on the back number must have the same letters as that registered in ISAS as this database provides the accreditation cards, athlete name on TV graphics and scoreboard etc. The top of the backnumber must be fixed horizontally and centrally three (3) cm from the bottom of the collar.

Please, order your backnumber from
www.officialbacknumber.com or
www.mybacknumber.com

Athletes who have been classified as J1 shall use a red circle on their backnumber. Deaf athletes shall use a yellow circle on their backnumber. The place of the mark of red and yellow circle is on the backnumber and not the side of the sleeve of the judogi.

Those athletes definitively classified as J1 should order their backnumbers with the red circle printed on them (option available at www.officialbacknumber.com). The organization will provide red and yellow stickers for those athletes who did not have a definitive classification prior to their arrival at the event.



2025 IBSA JUDO EUROPEAN CHAMPIONSHIPS TBILISI
19 – 21 SEPTEMBER 2025



JUDOGI AND BACKNUMBER PRE-CONTROL

The IBSA Judo will arrange a judogi and backnumber pre-control on the day when the draw is made. The judogi pre-control is compulsory for all competing athletes. For this purpose, the competitors should wear their judogi with the belt tightened. For the backnumber pre-control, athletes must bring both judogi (white and blue), for a control regarding any worn-out areas particularly on the collar and lapel, the colour, the IJF official label (obligatory), judogi brand (obligatory), national emblem, advertising, backnumber stitching, and any visible stains. Only if the judogi are compliant with the IJF and IBSA Judo rules will sponsor labels be given.

Athletes must show up for the backnumber pre-control. If they fail to do so, without a valid reason, the athlete will not be allowed to have a coach in the chair.

The official sponsor label of the event will be given provided that:

- The judogi are clean and dry.
- The backnumber, publicity and emblem are properly sewn and do not show any wear or tear.
- All previous advertising has been removed. Guide to attaching and removing the sponsor label:
 - Lay the judogi flat and attach the new sponsor label of the event on the back of the correct judogi.
 - Ensure the label is firmly attached around the edges.
 - Immediately after the competition and before washing remove the sponsor label.



2025 IBSA JUDO EUROPEAN CHAMPIONSHIPS TBILISI
19 – 21 SEPTEMBER 2025



In case there are no official sponsor labels, the local organisers will provide a small stamp for the inside of the judogi when approved. This stamp must go with the washing.

The LOC has the right to charge for any sewing service that is deemed larger than a small repair.

COMPETITION DAY JUDOGI CONTROL

Regardless the backnumber and judogi pre-check has been passed, the local organizers will inspect the judogi size and validity during the judogi control before each contest. The backnumber and publicity should comply with the current IBSA, IJF, and local organizer agreement.

Only those judogi who have passed the judogi pre-control will be admitted to this rapid control.

LOC will provide spare judogi to those athletes who do not have a valid judogi. In that case, the athlete will not be allowed to be directed by his coach during the bout and will be escorted to the tatami by a volunteer.

WEIGH IN

The weigh-in will be carried out in accordance with the IJF SOR. The official weigh-in for athletes will be scheduled the day before the competition (see programme for times and places).

As a general rule, the official weigh-in will take place at the official hotel the day before the start of the competition. On competition days, the weigh-in will take place at the sport hall, during the break between the preliminaries and final block.

The athletes must bring their passport and accreditation to the official weigh-in.

RANDOM WEIGH IN

A draw will be held to determine which athletes must undergo this weight control on each competition day.

The list of selected athletes will be published one hour before the start of the competition each day. From that moment on, the selected **athletes will have 15 minutes** to go to the random weigh-in room located in the sports hall. **The weight of the athletes cannot be more than 5 % higher than the official maximum weight limit**



**2025 IBSA JUDO EUROPEAN CHAMPIONSHIPS TBILISI
19 – 21 SEPTEMBER 2025**



of the category. In the event that the athlete has a weight greater than this limit or less than the minimum weight of his/her weight category after the 15-minute time limit established for the random weigh-in has expired, the athlete will not be allowed to participate in the competition. The athletes do not need to bring their passports, as their accreditation is sufficient for identification.

WORLD RANKING POINTS

An athlete is in the competition only once they pass the eye-examination and official weigh-in.

In the event that an athlete has passed the eye examination and the official weigh-in but does not win any bout, he/she will get half of the points established for the position in which he/she is finally placed.

Any athlete who does not come to the tatami for a contest will have a line put through his/her name on the draw sheet. His/her opponent must come to the tatami and bow. He/she will be declared the winner by fusen gachi and WRL points will be given.

REFEREEING

The contests will be refereed by International Referees (IJF A level with IBSA Judo license) selected by the IBSA Judo Referee Commission with the collaboration of the IJF Referee Commission.

The referees will use the CARE system. The referees are awarded qualification points after the competition.

COACHING

Coaches nominated by their IBSA Member Organization should respect the IBSA and IBSA Judo Rules. Any coaches not adhering to these rules could be subject to disciplinary action.

AWARDING CEREMONY

Each athlete who has won a medal must be present at the ceremony to receive their medal personally. Any athlete who is absent from the awards ceremony without a good reason may forfeit the medal.

Athletes must attend the medal ceremony barefoot, without any hat, cap or any similar head covering and wearing their IJF approved white judogi that conforms to the IJF judogi rules with special attention being paid to the publicity rule. If it is not clean, then they must wear a reserve judogi. It is



**2025 IBSA JUDO EUROPEAN CHAMPIONSHIPS TBILISI
19 – 21 SEPTEMBER 2025**



strictly prohibited for athletes on the podium to have national flags or similar items other than those on their judogi.

Any demonstration with religious, political, personal or commercial connotation is prohibited. Athletes must also be available for interview after the last awarding ceremony if requested by the Media Team of the event.

VIPs and officials must wear formal suit and shoes: jacket, trousers, shirt and tie. Women may wear a skirt, blouse and neckerchief.

MEDICAL MATTERS

During a contest a bleeding injury may be treated by the doctor on two (2) occasions. If the same bleeding requires treatment for the third time, the referee should declare the opponent the winner by kiken-gachi. However, the IBSA/IJF Ad Hoc Commission in consultation with the Medical Commissioner can decide to allow the same bleeding injury to be treated more than two (2) times. If bleeding cannot be stopped, the Medical Commissioner will inform the referee who declares the opponent the winner by kikengachi.

For the preservation of athletes' joint health, especially of those who lack experience in self-treatment, athletes are allowed to seek medical help for finger/toe joint resetting, including resetting and taping to secure the joint.

TEAMS EVENT RULES

Please check the rules in IBSA Judo website.

GOOD LUCK!